

LogiLock

YOUR THINKING LOCKER



STEEL FURNITURE EXCELLENCE



WHAT IS A SMART LOCKER?

In recent years, the workplace scenario has changed: the place where business is done is evolving, becoming more flexible and dynamic. More and more companies are shifting away from personal and exclusive spaces in favour of shared workspaces. As a result, the new priorities guiding companies in rethinking offices and workspaces require tools and products that can support this evolutionary phase in the business world and in social interactions. **LogiLock** is the smart device that integrates software and hardware solutions, including those connected to the web, for managing the delivery and distribution of objects, correspondence, documents, products, etc... The use of digital technology provides a flexible and immediate user-friendly service to meet multiple personal and professional needs.

LogiLock can be used in a variety of application areas, with significant reductions in cost and time management, as well as precise tracking of operations performed.

RECEIPT
OF LOCKER
AUTHORISATION
OR RESERVATION
REQUEST

DEPOSIT
AND
COLLECTION

REPORT
AND/OR
MONITORING
OF USE



USE

LogiLock can be used in a variety of settings such as offices, residential buildings, shopping centres, schools, gyms, hostels, hotels, pharmacies, universities, airports, and many more.

This technological innovation offers a more secure and convenient way to manage the delivery, distribution and storage of objects, and is used in a wide range of contexts to meet different needs.

Deposit: temporary or permanent storage of employees' or visitor's property.

Company asset management: control and distribution of shared corporate resources.

Pick-up and shipment: comprehensive management of Drop off and Pick up solutions.

Distribution: controlled and secure storage of goods and products.

Sale or Rental: locations of goods for sale or rental.

Dedicated features: customisable solutions for additional requirements.





Authentication via badge



Door with internal structure coated with corrosion-resistant zinc and aluminium alloy



Sensors for deposit verification



Representing the top of our range, this smart locker is equipped with fully customisable software to meet all needs. In the Flexi version, the locker consists of a master column, which houses the "thinking" nerve centre of the entire system, and modular elements that can be combined according to operational needs. Software features range from simple receipt and delivery to advanced locker management and can even be integrated with the company's ERP system. The real unique feature of this version lies in the fact that **the system itself can be programmed** to meet the most specific needs with customisation and dedicated programming.

FLEXI FEATURES

Touchscreen display
10"

Optical reader
Barcode/QR Code

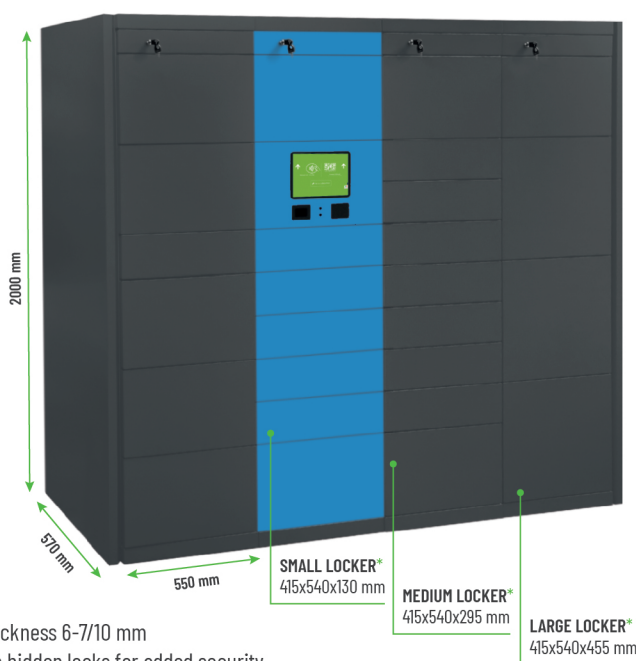
Ethernet 10/100/1000
Included

WI-FI
Included

Language
English

Power Consumption
65W, 50Hz, 220V

Example of dimensions per single column
550x570x2000 mm



- Coated steel frame thickness 6-7/10 mm
- Internal structure with hidden locks for added security
- Different locker sizes, according to specific needs
- CLOUD Management Console: dedicated cloud space and remote maintenance plus technical support included in the defined fixed monthly fee
- 4G Connection (optional)
- Side panels for end modules

*Typical locker dimensions

- MECHANICAL MAINTENANCE ACCESS PANEL IN CASE OF A POWER OUTAGE
- FULLY MODULAR, BOTH IN SIZE AND NUMBER OF DOORS
- POSSIBILITY OF INTEGRATION TO THE COMPANY'S MANAGEMENT SYSTEM
- ADVANCED REPORTING FOR ACCESS CONTROL AND GOODS PRESENCE SENSORS
- HIGH-RESOLUTION TOUCH DISPLAY
- AUTHENTICATION VIA QR-CODE, BADGE, PIN AND APP
- CUSTOMISABLE IN TERMS OF COLOUR AND GRAPHICS
- CHARGING SYSTEM FOR ELECTRONIC DEVICES
- POSSIBILITY OF INTEGRATING PAYMENT TERMINALS
- EASY WIRING AND MAINTENANCE BY PULLING OUT THE MODULAR FRAME
- MECHANICAL LOCK RELEASE SYSTEM
- DURABLE STRUCTURE, EVEN UNDER HEAVY LOADS
- FOR INDOOR USE ONLY



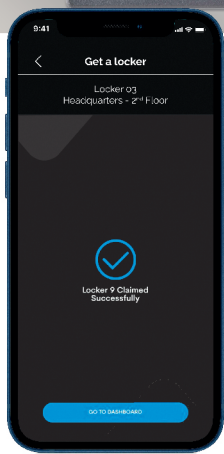
Payment terminal



High-resolution touch-screen display



Technical compartment for mechanical release in case of emergencies



As with the FLEXI solution, this system consists of a master column housing a multifunction interactive touch display that controls the opening systems of the lockers located in adjacent columns. It is ideal for anyone looking for a digital storage solution on a **"standard" platform**, with set features and without the need for customisation. The locker can be managed via a dedicated app.

BUSINESS FEATURES

Touchscreen display

8"

Optical reader

Barcode/QR Code

Ethernet 10/100/1000

Included

WI-FI

Included

Language

English

Power Consumption

65W, 50Hz, 220V

Example of dimensions per single column

550x570x2000 mm



- Coated steel frame thickness 6-7/10 mm
- Internal structure with hidden locks for added security
- Different locker sizes, according to specific needs
- CLOUD Management Console: dedicated cloud space and remote maintenance plus technical support included in the defined fixed monthly fee
- 4G Connection (optional)
- Side panels for end modules

*Typical locker dimensions



MECHANICAL MAINTENANCE ACCESS PANEL IN CASE OF A POWER OUTAGE



FULLY MODULAR, BOTH IN SIZE AND NUMBER OF DOORS



ADVANCED REPORTING FOR ACCESS CONTROL



HIGH-RESOLUTION TOUCH DISPLAY



AUTHENTICATION VIA QR-CODE, BADGE, PIN AND APP



CUSTOMISABLE IN TERMS OF COLOUR AND GRAPHICS



POSSIBILITY OF INTEGRATING PAYMENT TERMINALS



EASY WIRING AND MAINTENANCE BY PULLING OUT THE MODULAR FRAME



MECHANICAL LOCK RELEASE SYSTEM



DURABLE STRUCTURE, EVEN UNDER HEAVY LOADS



FOR INDOOR USE ONLY

SOLO LOCKS

DIGITAL LOCKING WITH ACCESS CONTROL



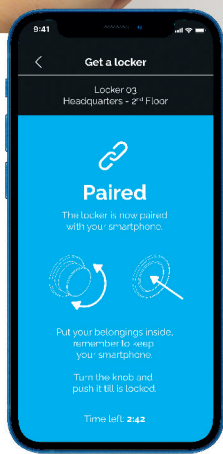
Quick and easy opening via QR code scan



Black knob



White knob



An advanced **digital locking** system designed to be built into our furniture solutions, ideal for working environments with a pyramid management system.

The strength of this system lies in its simplicity of use: the personnel in charge can quickly manage the access permissions of users, who can access their space simply by means of an app installed on their smartphone, which acts as a virtual key.

Thanks to battery-operated locks, in this conformation LogiLock does not need any wiring, which means the structure can be positioned in any space.

SOLO LOCKS FEATURES

Example of dimensions per single column

550x570x2000 mm

- Management via Bluetooth
- Coated steel frame, thickness 6-7/10 mm
- Internal structure able to support heavy loads
- Different locker sizes, according to specific needs



Dedicated app for locker reservation and opening



SHARED OR PRIVATE USE



CLOUD USEFUL FOR SYSTEM MANAGEMENT INCLUDED



ADVANCED REPORTING THAT ALLOWS ACCESS CONTROL



AUTHENTICATION VIA RFID BADGE AND FREE DEDICATED APP



BATTERY-OPERATED LOCK WITH A LIFESPAN OF 50 THOUSAND ACCESSES



WIRELESS SYSTEM, NO WIRING REQUIRED



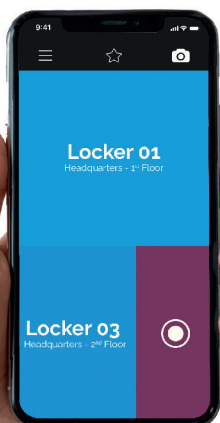
LOCK AVAILABLE IN TWO COLOURS: BLACK OR WHITE

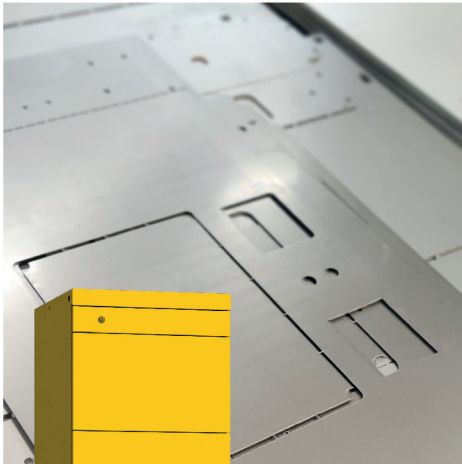


WHEN CLOSED, THE KNOB IS SECURE AND VANDAL-PROOF



FOR INDOOR USE ONLY





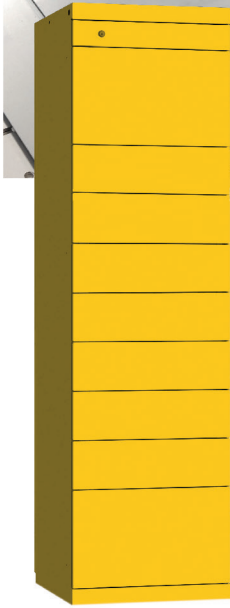
Tailor-made projects with state-of-the-art CNC panel moulding machines



Quality controls at all stages



High-precision robotic and manual welding



This solution is ideal for those who already have their own software and hardware system, but need a partner who can provide a solid, **high-performance container structure** where they can **showcase their technology**. Our experience in the field allows us to provide the customer with support for every construction need, starting with our basic designs that are designed to ensure the best usability of the locker on both the technical and the user side. These cabinets are fully customisable in terms of size, colour and graphics.

CUSTOM LOCKER FEATURES



Example of dimensions per single column
550x570x2000 mm

- Coated steel frame thickness 6-7/10 mm
- Strong internal structure, able to support heavy loads
- Different locker sizes, according to specific needs
- Side panels for end modules



INTERNAL SECURITY FRAME FOR LOCKS



FULLY MODULAR, BOTH IN SIZE AND NUMBER OF DOORS



CUSTOMISABLE IN TERMS OF COLOUR AND GRAPHICS



STRUCTURE DESIGNED FOR EASY WIRING AND MAINTENANCE



CAN BE INTEGRATED WITH ANY HARDWARE

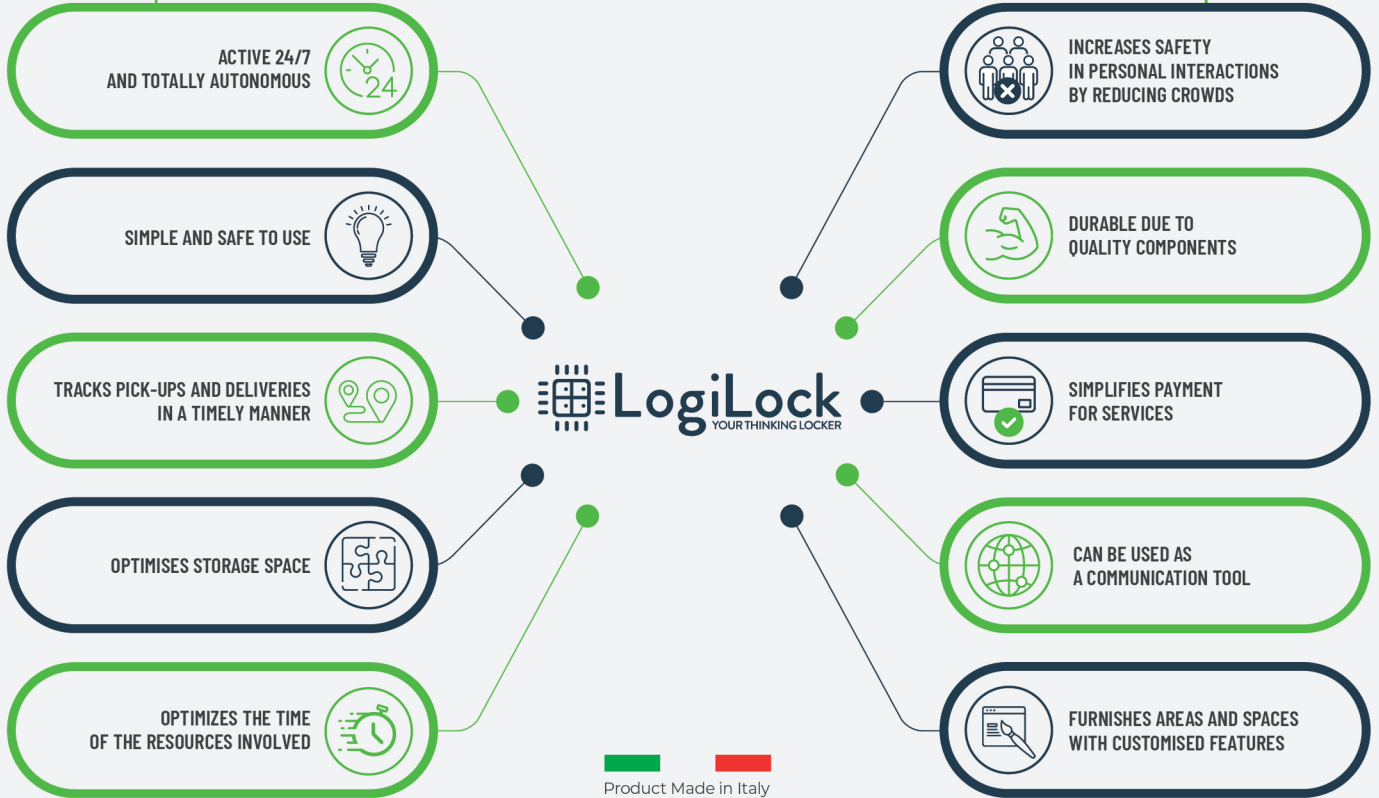


ONE-PIECE, READY-ASSEMBLED STRUCTURE, TO BE COMPLETED WITH CUSTOMER'S HARDWARE AND SOFTWARE



FOR INDOOR USE ONLY

ADVANTAGES



SERVICES

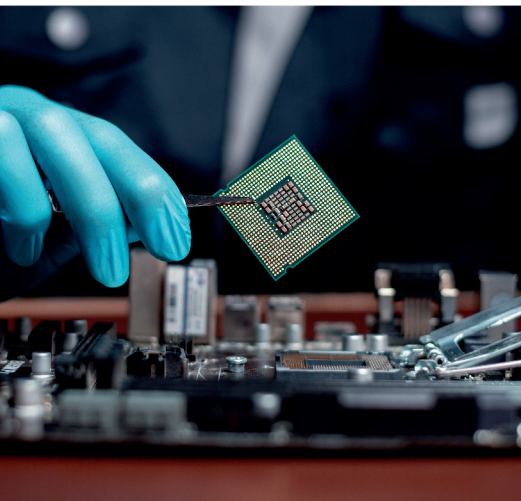


OUR PRODUCTS AND APPLICATION AREAS

STORAGE AND SAFEKEEPING OF GOODS	DISTRIBUTION OF GOODS FOR EMPLOYEES	STORAGE OF MATERIALS NOT ALLOWED IN THE COMPANY	RECEIPT AND DISPATCH OF PARCELS	MONITORING AND PICKING OF GOODS	CAN BE INTEGRATED WITH YOUR OWN SOFTWARE	CHARGING OF ELECTRONIC DEVICES	SUITABLE FOR SMALL MEALS (No cooking or refrigeration)
✓ FLEXI SOLUTION	✓ FLEXI SOLUTION	✓ FLEXI SOLUTION	✓ FLEXI SOLUTION	✓ FLEXI SOLUTION	✓ FLEXI SOLUTION	✓ FLEXI SOLUTION	✓ FLEXI SOLUTION
✓ BUSINESS SOLUTION	✓ BUSINESS SOLUTION	✓ BUSINESS SOLUTION	✓ BUSINESS SOLUTION	✓ BUSINESS SOLUTION	✓ BUSINESS SOLUTION	✓ BUSINESS SOLUTION	✗ BUSINESS SOLUTION
✓ SOLO LOCKS	✓ SOLO LOCKS	✓ SOLO LOCKS	✓ SOLO LOCKS	✗ SOLO LOCKS	✗ SOLO LOCKS	✗ SOLO LOCKS	✗ SOLO LOCKS
✓ CUSTOM LOCKER	✓ CUSTOM LOCKER	✓ CUSTOM LOCKER	🚩 CUSTOM LOCKER	🚩 CUSTOM LOCKER	✓ CUSTOM LOCKER	🚩 CUSTOM LOCKER	🚩 CUSTOM LOCKER

✓ INCLUDED
 🚩 OPTIONAL
 ✗ NOT ENVISAGED

The manufacturer reserves the right to make changes to the product at any time, without prior notice, in order to improve or update the product range offered.



MANUFACTURER'S EXPERIENCE AND RELIABILITY AT YOUR SERVICE

